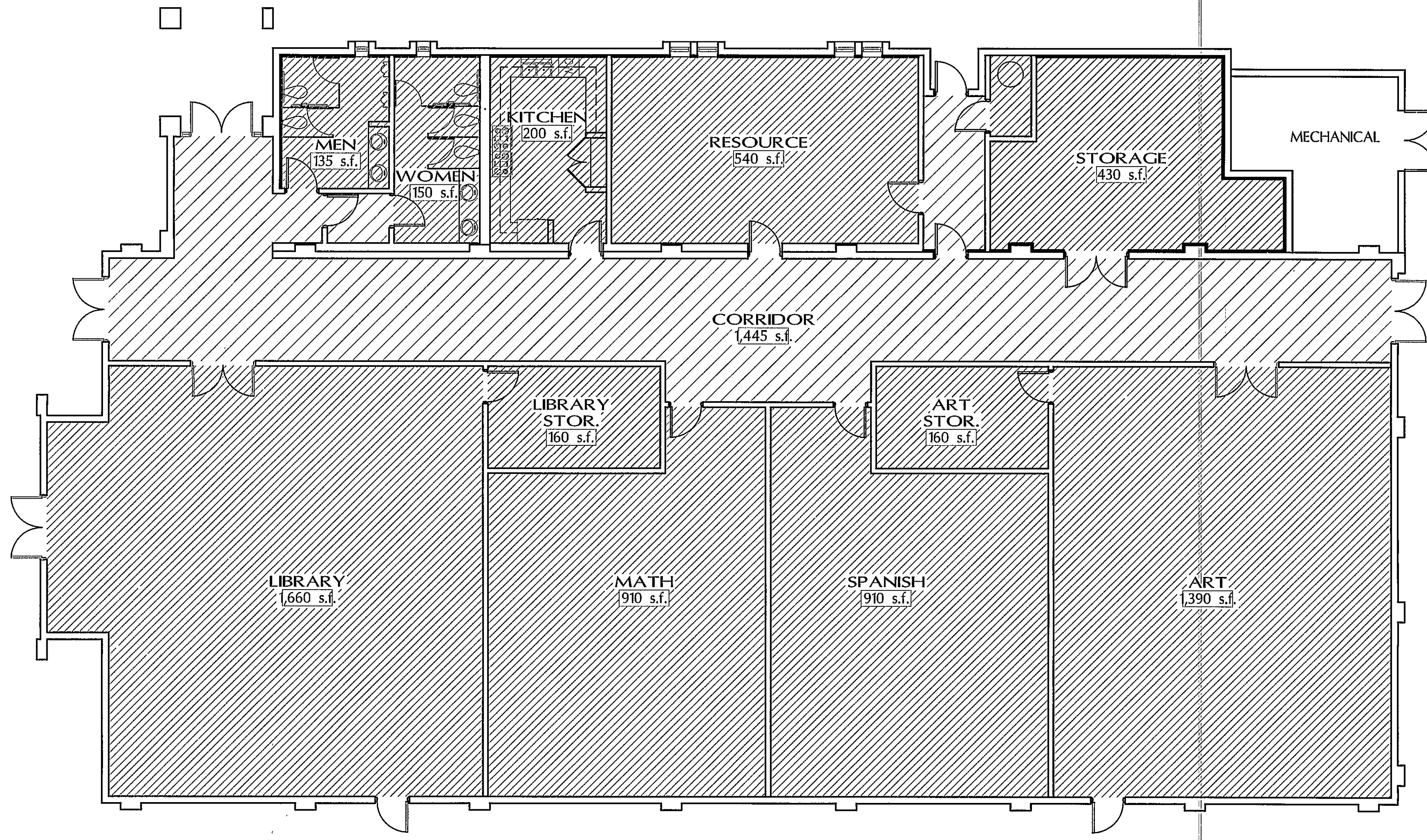


**SCHOOL ADMINISTRATION**  
± 5,700 S.F. 1/8"=1'-0"



**MAGUIRE HALL RENOVATION**  
± 8,700 S.F. 1/8"=1'-0"

- LEGEND**
- SCHOOL ADMINISTRATION
  - PARISH ADMINISTRATION
  - CONFERENCE/MEETING ROOM
  - PRE-SCHOOL/EXT'D DAY CARE
  - SUPPORT SPACES
  - RELIGIOUS FORMATION
  - RESTROOMS
  - CIRCULATION
  - CLASSROOMS

**SCHEMATIC FLOOR PLANS** 1/8" = 1'-0"

**OUR LADY OF PERPETUAL HELP**  
**PARISH AND SCHOOL**  
SCOTTSDALE, ARIZONA

**The Roman Catholic Church of Phoenix**  
400 E. Monroe Street  
Phoenix, Arizona

Preliminary Schematic Design

**Todd & Associates Inc.**

Architecture/Planning/Landscape Architecture  
4019 North 44th Street • Phoenix, Arizona 85018 • (602) 952-8280 • FAX (602) 952-8995  
Job# 03-6013-00 Date: 09-27-04 Revision: 3 Preliminary Not For Construction